

For nasal allergic symptoms caused by pollen, house dust or such.

MADE IN JAPAN

# エージーノーズ® **アレルギーカット<sup>®</sup>C**

## AG Nose Allercut C

Anti-allergy nasal spray containing sodium cromoglicate

Class 2 OTC medicine



### Indications

Relief of the following nasal allergic symptoms caused by pollen, house dust or such: Runny nose (excessive nasal drip), stuffy nose, sneezing, headache dull (feeling heavy in the head)

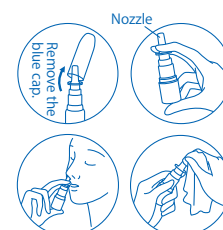
### Dosage and Administration

Age	Amount per dose	Daily dose
Adults (15 years or over)	Spray once into each nostril.	3 to 5 times. (Have an interval of at least 3 hours between doses.)
7 to 14 years		
Under 7 years	Do not use.	

<Precautions related to Dosage and Administration>

- (1) Follow the Dosage and Administration strictly.
- (2) Excessive use may rather cause stuffy nose.
- (3) Use for children aged 7 or over should be supervised by guardians.
- (4) This product is for nasal use only.

1. Blow the nose carefully before use.( Blow the nose gently.)
2. Remove the blue cap, and hold the container as shown in the figure.  
(Before using this product for the first time, spray some times until the mist of medicinal liquid comes out.)
3. Insert the nozzle tip into one nostril, and spray once. Repeat the same operation in the other nostril.
4. After use, wipe the nozzle with a clean tissue or such, and replace the cap.



## Ingredients and Quantities

This product is a colorless to pale yellow clear solution and contains the following ingredients per 100 mL.

Ingredient	Quantity
Sodium cromoglicate	1 g
Chlorpheniramine maleate	0.25 g
Naphazoline hydrochloride	0.025 g
Dipotassium glycyrrhizinate	0.3 g

Other ingredients Sodium edetate, polysorbate 80, glycerin, *l*-menthol, flavor, ethanol, benzalkonium chloride

<Precautions related to Ingredients and Quantities>

As this product contains alcohol, it may stimulate the applied area.

## Precautions

### Things to avoid

(If you fail to follow these precautions, your present symptoms may worsen, or side effects/accidents may occur more readily.)

1. This product should not be used by the following persons:

Persons who have had allergic symptoms with this product or its ingredients.

2. Do not drive vehicles or operate machines after using this product. (Sleepiness or such may occur.)
3. Do not use this product continuously for a long term.

### Things to consult

1. The following persons should consult a doctor or pharmacist before use.

- (1) Persons who are receiving medical treatment from a doctor.
- (2) Persons who are receiving medical treatment for allergy such as desensitization therapy.
- (3) Women who are pregnant or considered to be pregnant.
- (4) Persons who have had allergic symptoms with medicines or such.
- (5) Persons who have been diagnosed as the following conditions:  
Hypertension, heart disease, diabetes, thyroidal functional disorder, glaucoma
- (6) Persons who can not assure the reason of their symptoms as an allergy.